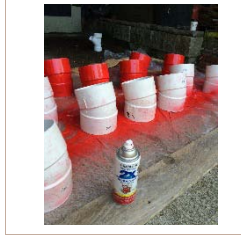
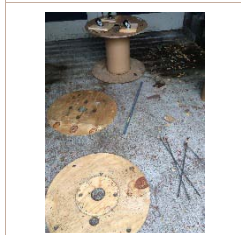


Spool Stack

September 11, 2015

Get Gardening - Architects Without Borders



Raw Materials

Recycled electrical wire spools (Free), ABS pipe (\$1/ea), ½" conduit (\$2.30/10'), wheels (\$3.44/ea) and paint (\$4.99). And 3 (\$2.20/ea) bolts to tie the top and bottom together.

Add Supports if necessary

Depending on the type of spools you find and the weight of your plantings, you may need to reinforce the vertical supports with more wood or ½" conduit in this case.

Assemble Layers

The larger spools were placed on the bottom and smaller, lighter weight spools on top. 1" screws were used to attach each spool except for the middle where I used bolts so it could be disassembled.

Make it mobile & spruce it up

Swivel wheels were added for mobility and to allow for rotating the beds for even sunlight and watering. One can of paint was used for color and left over chalkboard paint to allow for labeling of different plant types.

